

# **Eurofighter Typhoon** *Parkjet*



## **Cockpit Construction Guide**

**NOTE :**

**This guide refers to a vacuum formed canopy and  
3d printed pilot / HUD.**

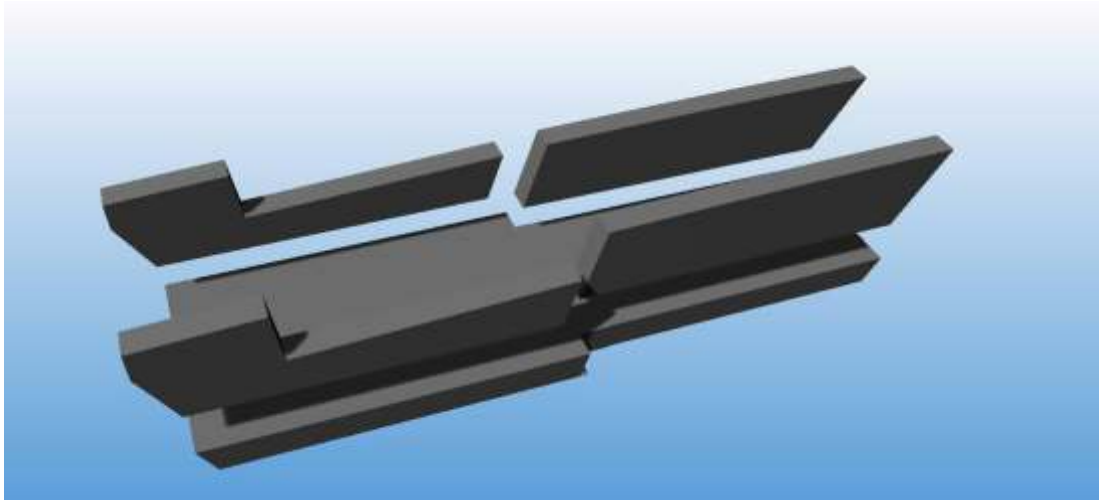
**These are available to purchase from  
[Clicketyclarkstone@gmail.com](mailto:Clicketyclarkstone@gmail.com)**

**CAUTION :**

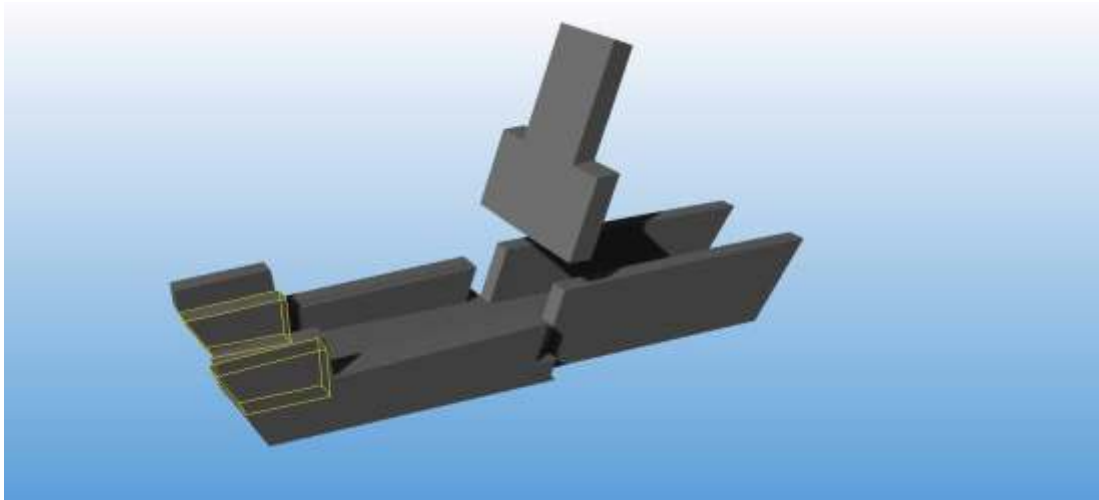
**This guide has full sized drawings within it.**

**Print this document out a A4 1:1  
(actual size - not scaled to fit)**

---

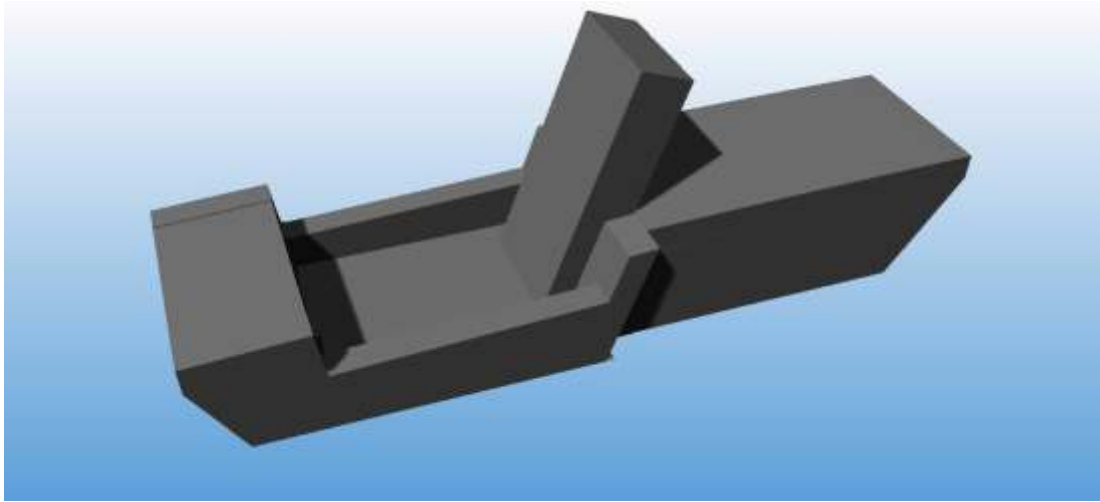


Glue the cockpit sides + cockpit rear sides to the cockpit base. allowing the 6mm gap for the seat back support (next stage)

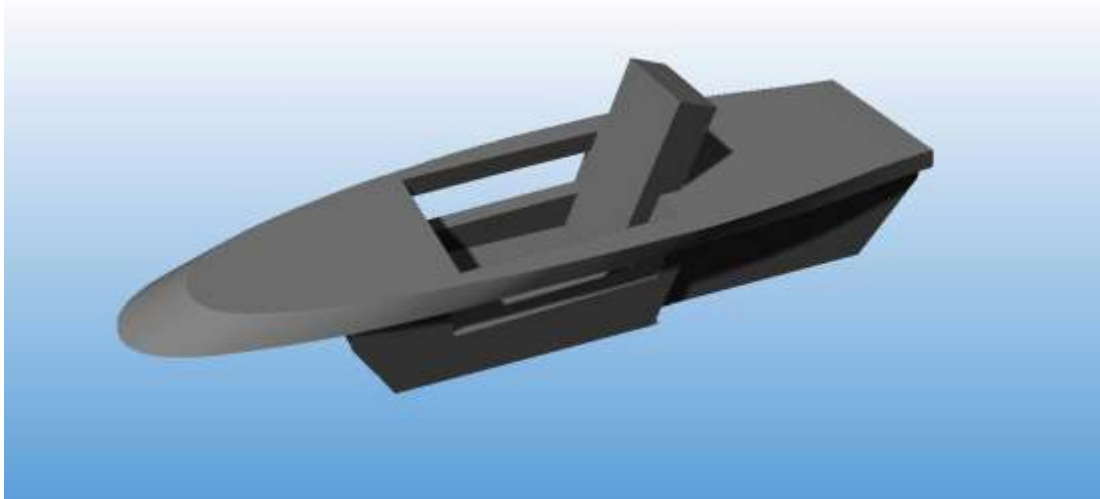


Glue the seat back support in place and the cockpit sides fwd.



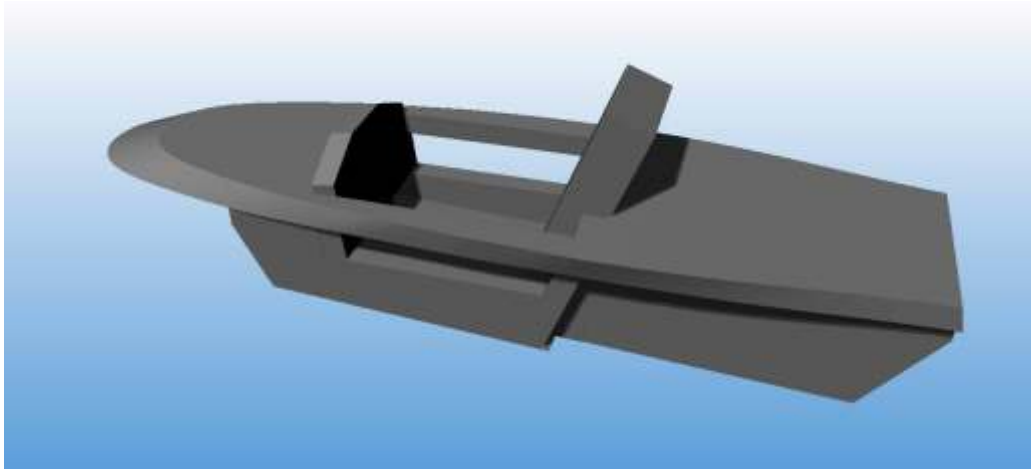


Glue the front and rear locator tabs onto the assembly, then add the seat back.

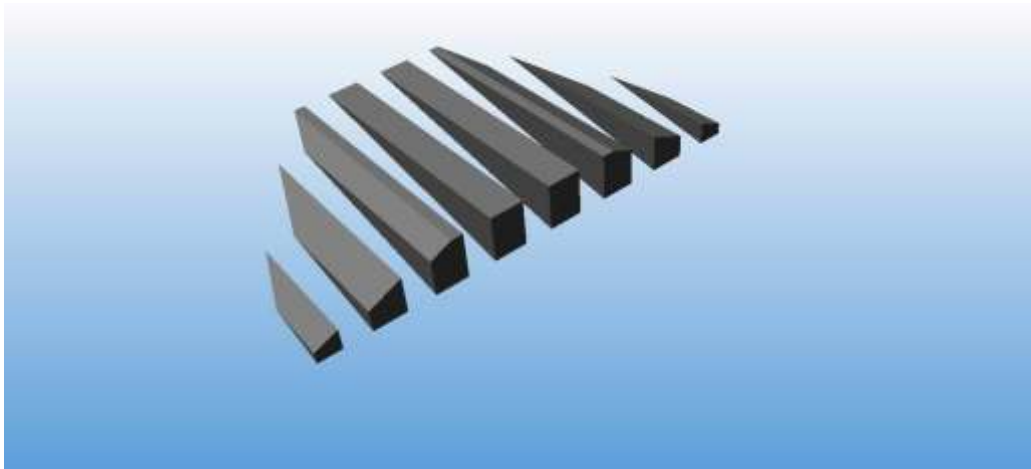


Glue the main canopy support onto the assembly as shown.



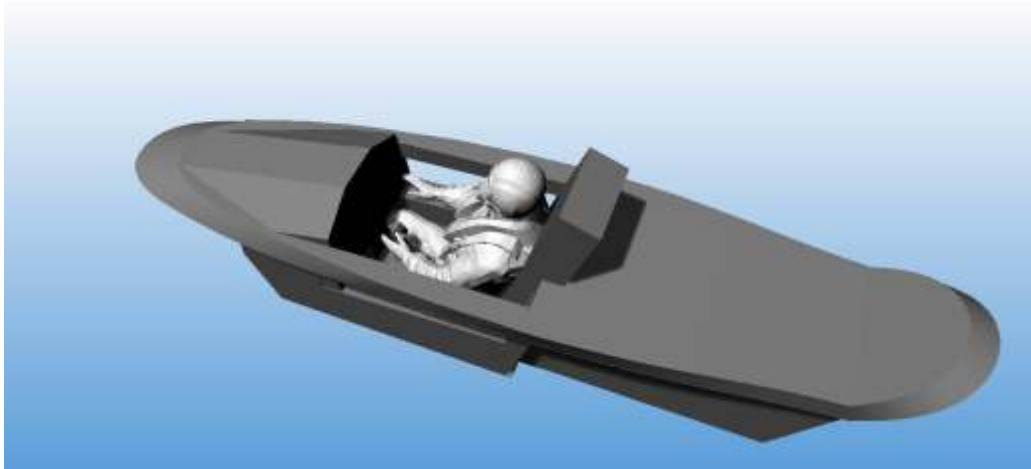


Glue the instrument panel in place as shown.



Glue together all the pieces of the console forward area





Glue the forward console area in place. Glue the rear canopy support in place too. Paint the whole assembly a dark grey colour - then attach the decals.

Paint and Glue the 3D printed pilot to the seat and add the 3D printed HUD



Glue the canopy to the assembly and attach the magnets and tongue to hold the canopy in place.



